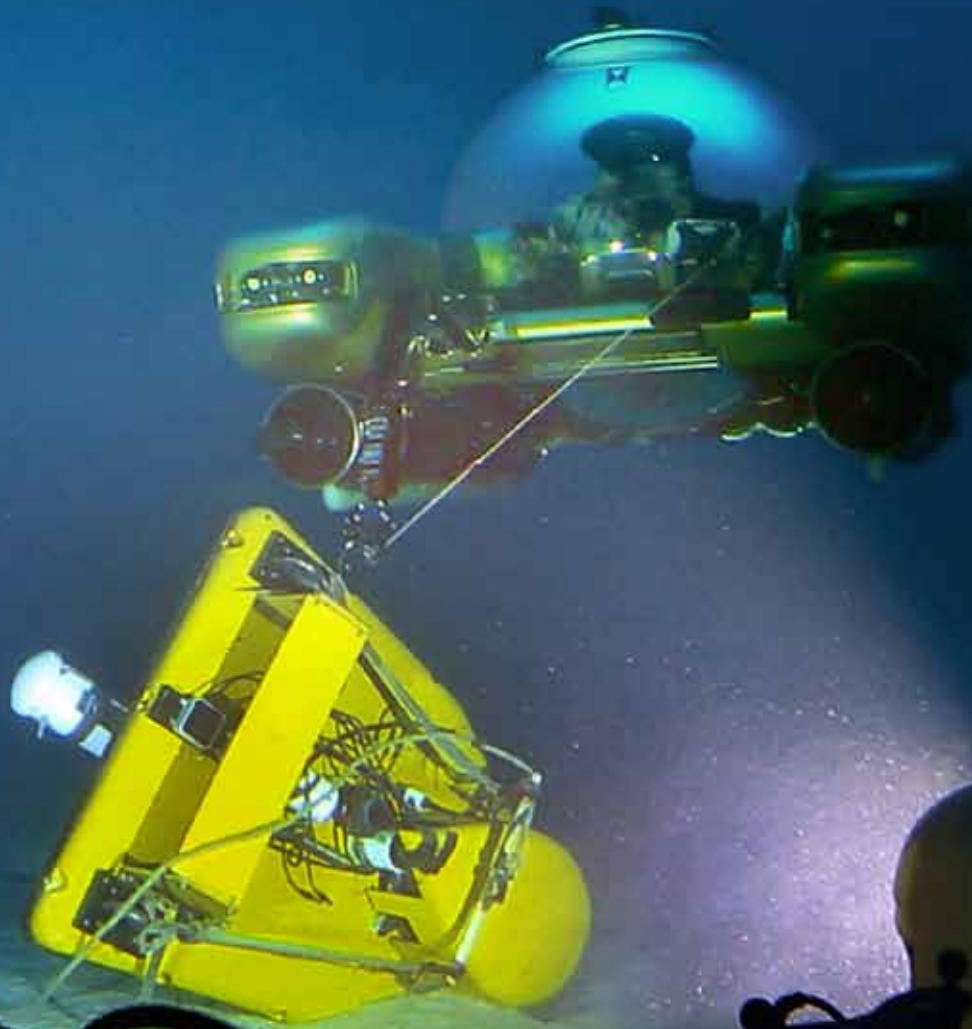


WWW.GLOBALSUBDIVE.COM

A **WORLD CLASS** EXPLORATION,
RESEARCH, WORK PLATFORM AND TEAM



SEARCH AND RECOVERY OF LOST EQUIPMENT 560FSW

WWW.GLOBALSUBDIVE.COM

MISSION

GLOBAL UNDERWATER EXPLORERS (GUE)
IS A NON PROFIT 501 C(3) FISCAL SPONSOR
OF PROJECT BASELINE.

GUE IS COMMITTED TO THREE
ORGANIZATIONAL PILLARS;
EDUCATION, EXPLORATION AND CONSERVATION.

PROJECT BASELINE IS
GUE'S CONSERVATION INITIATIVE.

OUR ORGANIZATION ENCOURAGES AND
SUPPORTS COMMUNITY MEMBERS WHO ARE
VESTED IN THE LONG TERM OVERSIGHT
OF LOCAL AQUATIC ENVIRONMENTS.

OUR VOLUNTEERS RECORD AND CATALOG
OBSERVATIONS OF THESE PLACES INTO A
WIDELY ACCESSIBLE DATABASE.

IT IS OUR VISION THAT THROUGH EXTENSIVE,
LONG TERM DOCUMENTATION OF THESE AREAS,

THE SCIENTIFIC AND NON SCIENTIFIC
COMMUNITY WILL LISTEN TO THE
STORY OF WATER

THAT IS BEING INFLUENCED AND
TOLD BY GENERATION AFTER GENERATION.





A-FRAME 15 TON

**KNUCKLE BOOM CRANE
PALFINGER PK-32,000M**

**SUB TENDER 9M RHIB
ENCLOSED PILOT HOUSE**

**DIVE TENDER 8M RHIB
OPEN CENTER CONSOLE**



**SUB TENDER 4M
SOFT BOTTOM**

**FAST SUPPORT VESSEL 13M
CUSTOM CENTER CONSOLE**

WWW.GLOBALSUBDIVE.COM

PRIVATE R/V BASELINE EXPLORER ENTERED SERVICE 2015

“DP-1” DYNAMIC POSITIONING PROVIDES PRECISE STATION KEEPING
IN DEEP WATER AND ADVANCED LAUNCH AND RETRIEVAL OF
TENDERS AND MACHINERY IN THE OPEN OCEAN

CRUISING SPEED 11 KNOTS

65 GPH AVERAGE

LENGTH 45 M

BEAM 11 M

CLEAR DECK 21 M X 8 M (631 SQ M)

2 CUMMINS K38M TIER 2 ENGINES

24 BERTHS

FUEL CAPACITY 77,550 GAL

FRESH WATER BALLAST





PROJECT BASELINE

CURRENTLY SUPPORTS 65 TEAMS
OPERATING IN 27 COUNTRIES
DOCUMENTING MORE THAN
150 SITES IN BOTH
MARINE AND FRESHWATER
ENVIRONMENTS.

THE BASELINE EXPLORER

PROGRAM WAS ESTABLISHED TO
FOSTER THIS MISSION BY PAIRING THE
WORLD'S MOST CAPABLE
VOLUNTEER DIVERS WITH OBSERVATION
SUBMERSIBLES ABOARD A VESSEL
TAILORED TO ENGAGE
COLLABORATIVE SCIENTIFIC
AND CONSERVATION PROJECTS
ANYWHERE IN THE ATLANTIC OCEAN
AND ITS BORDERING SEAS.



WWW.GLOBALSUBDIVE.COM

An underwater photograph showing two divers in a vast field of discarded tires. The divers are equipped with scuba gear, including tanks and masks. The water is clear, and the tires are densely packed on the seabed, creating a textured, repetitive pattern. The overall color palette is dominated by shades of blue and green.

PROJECT BASELINE **EMPOWERS**
PASSIONATE CITIZENS
TO OBSERVE AND RECORD CHANGE
WITHIN THE WORLD'S AQUATIC
ENVIRONMENTS IN A WAY
THAT FOSTERS PUBLIC
AWARENESS AND
SUPPORTS
POLITICAL
ACTION.

OSBORNE REEF 1.3 MILLION TIRES, FT LAUDERDALE, FLORIDA

WWW.GLOBALSUBDIVE.COM



TWO TRITON 1000/2 ABS CLASSED SUBMERSIBLES (305 METER)
WITH DEEP SEA LED LIGHTING, MANIPULATOR ARMS, USBL
TRACKING/NAVIGATION, OPTIONAL COLLECTION BASKETS
AND A WIDE RANGE OF CAMERA SUPPORT SYSTEMS.

WWW.GLOBALSUBDIVE.COM

GUE TECH DIVE TEAM
TRAINING AND SUPPORT



WWW.GLOBALSUBDIVE.COM



PROVIDE ACCESS TO UNDERWATER ENVIRONMENTS
FOR MEDIA PERSONNEL, SCIENTIFIC RESEARCHERS,
POLICY MAKERS AND ENVIRONMENTAL MANAGEMENT
REPRESENTATIVES VIA MANNED SUBMERSIBLES, INTEGRATING THE HUMAN EXPERIENCE

WWW.GLOBALSUBDIVE.COM

OUR VISION IS TO EFFECT POSITIVE
CHANGE WITHIN THE WORLD'S
AQUATIC ENVIRONMENTS,
MEASURABLE IN TERMS
OF IMPROVEMENT
WITHIN OUR LIFETIMES,
AND TO ESTABLISH
A PERMANENT
POSITIVE PRESENCE
ACROSS THE GLOBE
NEEDED TO SUSTAIN
THOSE IMPROVEMENTS.



47 MILLION GALLONS WASTEWATER PER DAY HOLLYWOOD, FLORIDA

WWW.GLOBALSUBDIVE.COM



PORTABLE DIVE LOCKER (20-FT VAN) STOCKED WITH HALCYON
TWIN TANK AND REBREATHING SUPPORT EQUIPMENT, LONG-RANGE
DIVER PROPULSION VEHICLES AND BROWNIE'S THIRD LUNG HOOKAH DIVE SYSTEMS.

WWW.GLOBALSUBDIVE.COM



DECO CHAMBER
NITROX MAKER
TRIMIX / HELIOX
BOOST PUMPS

WWW.GLOBALSUBDIVE.COM



ROBERT M. CARMICHAEL

FOUNDER/CEO
BROWNIE'S GLOBAL LOGISTICS,
LLC
(WWW.GLOBALSUBDIVE.COM)

FOUNDING BOARD MEMBER



SUBMERSIBLE EXPLORATION
TEAM LEADER/PILOT

WWW.GLOBALSUBDIVE.COM



TURN KEY AND CUSTOMIZABLE CONFIGURATION

WWW.GLOBALSUBDIVE.COM

CHARTER, PRIVATE AND CORPORATE SPONSORSHIPS AVAILABLE
CONTACT ROBERT M. CARMICHAEL, ROBERT@GLOBALSUBDIVE.COM
MOBILE: 1-954-214-3727



FIND US ON YOUTUBE AT GLOBALSUBDIVE

WWW.GLOBALSUBDIVE.COM